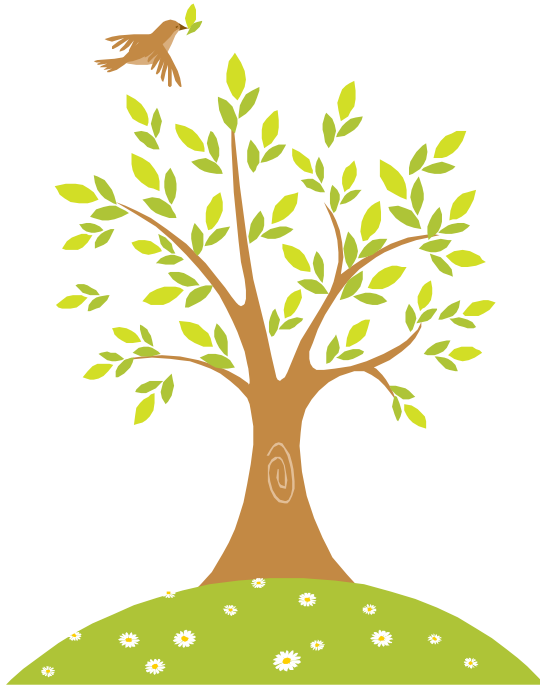


Library Corner November 2008



Well, here we are, another year almost over and another library corner!

CHEST 2008

Methacholine Challenge Methods

Donald W. Cockcroft

Chest 2008;134 678-680

<http://www.chestjournal.org/cgi/content/full/134/4/678?etoc>

Differences in the Response to Methacholine Between the Tidal Breathing and Dosimeter Methods: Influence of the Dose of Bronchoconstrictor Agent Delivered to the Mouth

Luis Prieto, Victoria Lopez, Ruth Llusar, Rocio Rojas, and Julio Marin Chest 2008;134 699-703

<http://www.chestjournal.org/cgi/content/abstract/134/4/699?etoc>

Fat Distribution and End-Expiratory Lung Volume in Lean and Obese Men and Women



Tony G. Babb, Brenda L. Wyrick, Darren S. DeLorey, Paul J. Chase, and Mabel Y. Feng Chest 2008;134 704-711

<http://www.chestjournal.org/cgi/content/abstract/134/4/704?etoc>

Multiple Sleep Latency Test and Maintenance of Wakefulness Test



Shannon S. Sullivan and Clete A. Kushida *Chest* 2008;134 854-861
<https://webmail.health.wa.gov.au/exchweb/bin/redirect.asp?URL=http://www.chestjournal.org/cgi/content/abstract/134/4/854?etoc>

Diagnosis and Management of Work-Related Asthma: ACCP Consensus Statement

Chest Volume 134, Issue 3S (September 2008)

AJRCCM November 2008

Is the Cardiovascular System the Primary Target of Obstructive Sleep Apnea?

Geraldo Lorenzi-Filho and Luciano F. Drager

Am. J. Respir. Crit. Care Med. 2008; 178: 892-893

Endothelial Function and Arterial Stiffness in Minimally Symptomatic Obstructive Sleep Apnea

Malcolm Kohler, Sonya Craig, Debby Nicoll, Paul Leeson, Robert J. O. Davies, and John R. Stradling

Am. J. Respir. Crit. Care Med. 2008; 178: 984-988.

THORAX November 2008

Respiratory muscle unloading improves leg muscle oxygenation during exercise in patients with COPD

A Borghi-Silva, C C Oliveira, C Carrascosa, J Maia, D C Berton, F Queiroga, Jr, E M Ferreira, D R Almeida, L E Nery, and J A Neder

Thorax 2008; 63: 910-915.

ERJ November 2008

Alveolar permeability and stretch: too far, too fast

X. Trepap and R. Farré

Eur Respir J 2008 32: 826-828

Lung function decline in COPD trials: bias from regression to the mean

S. Suissa

Eur Respir J 2008 32: 829-831.

Current clinical guideline definitions of airflow obstruction and COPD overdiagnosis in primary care

T. R. J. Schermer, I. J. M. Smeele, B. P. A. Thoonen, A. E. M. Lucas, J. G. Grootens, T. J. van Boxem, Y. F. Heijdra, and C. van Weel

Eur Respir J 2008 32: 945-952

Accuracy and reliability of pulse oximetry at different arterial carbon dioxide pressure levels

X. Muñoz, F. Torres, G. Sampol, J. Rios, S. Martí, and E. Escrich
Eur Respir J 2008 32: 1053-1059.

Lung hyperinflation: foe or friend?

M. Eichinger, S. Waltersbacher, T. Scholz, K. Tetzlaff, K. Röcker, C-M. Muth, M. Puderbach, H-U. Kauczor, S. Sorichter for the breath-hold diving study group of Baden-Württemberg
Eur Respir J 2008 32: 1113-1116.

The bell tolls for the relationship between house dust mite exposure and asthma in childhood

Catarina Almqvist, Guy Marks, Qiang Li, Daniel Crisafulli, and Euan Tovey
EUROPEAN RESPIRATORY REVIEW 2008 17: 96-98.

Alison