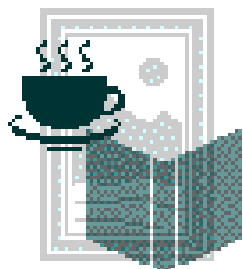


LIBRARY CORNER AUGUST 2009



Hmmm...apparently August's birth flower is the gladiolus....?



THORAX

Qualitative aspects of breathlessness in health and disease

J Smith, P Albert, E Bertella, J Lester, S Jack, and P Calverley
Thorax 2009; 64: 713-718.

Neural respiratory drive in obesity

J Steier, C J Jolley, J Seymour, M Roughton, M I Polkey, and J Moxham
Thorax 2009; 64: 719-725.

CHEST

Respiratory Function in Patients With Stable Anorexia Nervosa

Giovanni Gardini Gardenghi, Enrico Boni, Patrizia Todisco, Faust Manara, Andrea Borghesi, and Claudio Tantucci
Chest published July 6, 2009

Measurement of Dynamic Hyperinflation After a 6-Min Walk Test in COPD Patients

Etienne Callens, Sémia Graba, Karine Gillet-Juvin, Mohamed Essalhi, Brigitte Bidaud-Chevalier, Claudine Peiffer, Bruno Mahut, and Christophe Delclaux
Chest published July 6, 2009

Childhood Respiratory Illness and Lung Function at Ages 14 and 50 Years

Peter W. G. Tennant, G. John Gibson, Louise Parker, and Mark S. Pearce
Chest published July 6, 2009

Mechanical effects of obesity on airway responsiveness in otherwise healthy humans

Roberto Torchio, Alessandro Gobbi, Carlo Gulotta, Raffaele Dellaca, Marco Tinivella, Robert E. Hyatt, Vito Brusasco, and Riccardo Pellegrino J Appl Physiol 2009;107 408-416
<http://jap.physiology.org/cgi/content/abstract/107/2/408?etoc>

Bronchodilator effects of exercise hyperpnea and albuterol in mild-to-moderate asthma

Manlio Milanese, Riccardo Saporiti, Stefano Bartolini, Riccardo Pellegrino, Michele Baroffio, Vito Brusasco, and Emanuele Crimi
J Appl Physiol 2009;107 494-499
<http://jap.physiology.org/cgi/content/abstract/107/2/494?etoc>

Three-dimensional measurement of alveolar airspace volumes in normal and emphysematous lungs using micro-CT

Harikrishnan Parameswaran, Erzsebet Bartolak-Suki, Hiroshi Hamakawa, Arnab Majumdar, Philip G. Allen, and Bela Suki
J Appl Physiol 2009;107 583-592
<http://jap.physiology.org/cgi/content/abstract/107/2/583?etoc>

Respiratory muscle function and activation in chronic obstructive Pulmonary disease

David K. McKenzie, Jane E. Butler, and Simon C. Gandevia
J Appl Physiol 2009;107 621-629
<http://jap.physiology.org/cgi/content/abstract/107/2/621?etoc>

And from NSW

Deep inspirations protect against airway closure in nonasthmatic subjects

David G. Chapman, Norbert Berend, Gregory G. King, Brent E. McParland, and Cheryl M. Salome
J Appl Physiol 2009;107 564-569
<http://jap.physiology.org/cgi/content/abstract/107/2/564?etoc>

And from NZ, courtesy of David R-R

[Responses of FEV6, FVC, and FET to inhaled bronchodilator in the adult general population](#)

Kainu A, Lindqvist A, Sarna S, Lundback B, Sovijarvi A

Respiratory Research 2009, **10**:71 (28 July 2009)

[[Abstract](#)] [[Provisional PDF](#)]

Alison